

Campestre Elementary School Back-to-School Plan

The conditions surrounding the COVID-19 pandemic are continually evolving, and Campestre Safe Return-to-School plans will be constantly evaluated to adapt to the continuing trends of the COVID-19 virus, especially in the City of Socorro and El Paso County.

Please know that Socorro ISD will follow recommendations for school opening and operation from the Centers for Disease Control (CDC), as well as state and local health officials. Circumstances related to COVID-19 may change throughout the coming school year, and this document will be updated as conditions change.

We will be following the Socorro ISD Back-to-School plan, but this addresses the specific needs of Campestre Elementary Campus.

Morning Entry Plan

Each grade level will report to a specific area of the building to stay with their c groups. While in their appointed areas, students will maintain social distancing as much as possible. Breakfast will continue to be served as in the classroom from 7:15-7:30am, and students will eat at their desks and clean their area to get ready for the day. At 7:15 am, students report to their classrooms.

Car Duty will be from 7:am -7:15am and performed by our grade level teachers and staff, rotating weekly. Staff have the option of wearing face coverings and other appropriate safeguards while opening doors. All students capable of exiting vehicles by themselves are encouraged to do so to protect staff and students. Prior to 7:15 am, parents and students will be responsible for student's entry to school, but there will be staff members outside starting at 7:00am to monitor.



Figure 1: Drop Off/ Pick up Areas

CAMPESTRE ELEMENTARY SCHOOL

11399 Socorro Road • El Paso, TX 79927-3011
915/937-7300 • Fax 915/851-1715 • Website: www.sisd.net .

Socorro Independent School District does not discriminate on the basis of race, color, national origin, sex, disability, or age in its programs, activities or employment. El distrito de Socorro no discrimina por raza, color, origen nacional, sexo, de necesidades especiales, o de la edad en el programa, actividades o empleo.

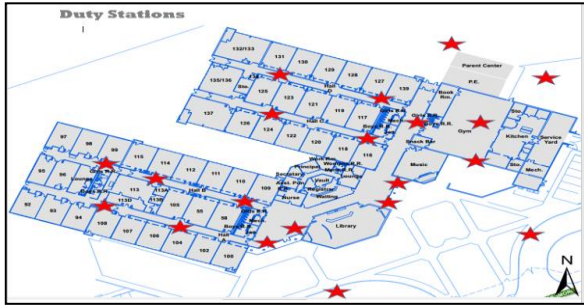
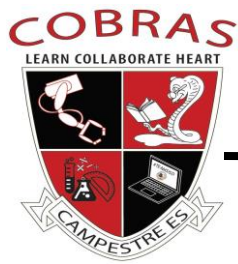


Figure 2: Teacher Entry Duty Areas



Figure 2: PK & KG Entry/Dismissal

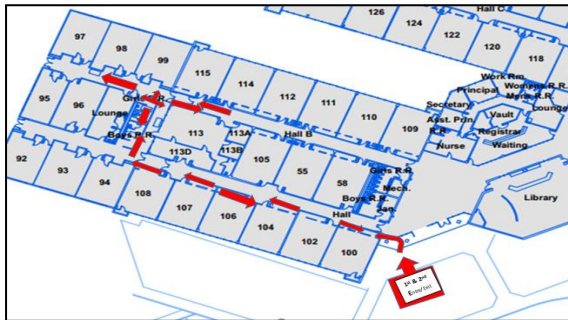


Figure 3: 1st & 2nd Entry/Dismissal

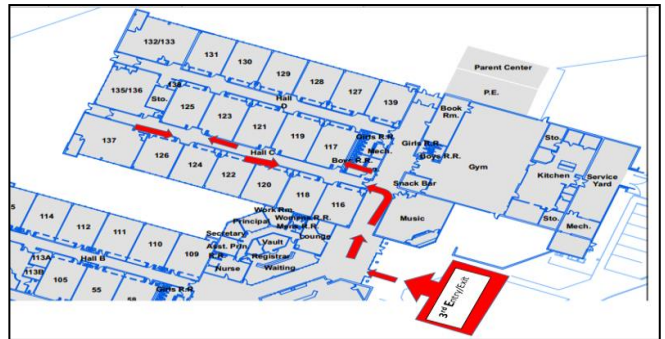


Figure 4: 3rd Entry/Dismissal

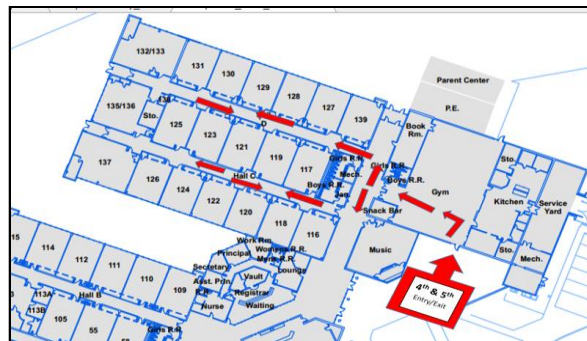
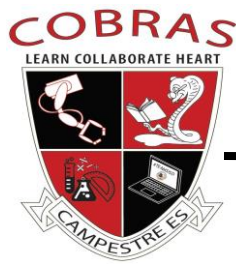


Figure 5: 4th & 5th Entry & Dismissal

CAMPESTRE ELEMENTARY SCHOOL

11399 Socorro Road • El Paso, TX 79927-3011
 915/937-7300 • Fax 915/851-1715 • Website: www.sisd.net

Socorro Independent School District does not discriminate on the basis of race, color, national origin, sex, disability, or age in its programs, activities or employment. El distrito de Socorro no discrimina por raza, color, origen nacional, sexo, de necesidades especiales, o de la edad en el programa, actividades o empleo.



Lunch/Recess Plan

Each grade level will rotate in and out of the cafeteria every 15 minutes. After each grade level finishes lunch, the tables and will be sanitized. The remaining 15 minutes of lunch will be recess. Recess will be 15 minutes duration to allow for the next grade level to report to the playground and minimize cross-contamination of grade level groups.

We encourage that students open and their lunch independently, but there will be staff members available for help.

Here is our lunch schedule:

K-5 th Grade Lunch Schedule	
Grade Level	Lunch
PK	10:45-11:15
Kinder	10:45-11:15
1 st Grade	11:00-11:30
2 nd Grade	11:15-11:45
3 rd Grade	11:30-12:00
4 th Grade	11:45-12:15
5 th Grade	12:00-12:30

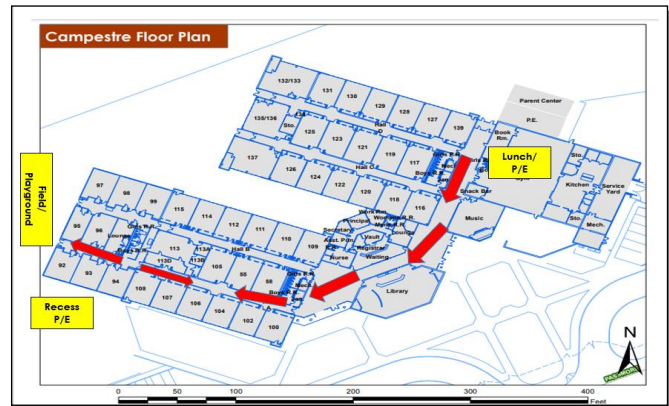


Figure 6: Recess/ PE

Dismissal Plans

Our dismissal plan will be very similar to the morning. Car riders will report to their designated grade level area, and they will be dismissed from their rooms using our car dismissal system.

Bus riders will report to their designated areas. Students will be dismissed by their teachers and walked down by staff members.

P.E./Music

Students will attend P.E. daily and on scheduled days for music, with the same grade level and will meet face to face in their assigned rooms.

Meet the Teacher Night

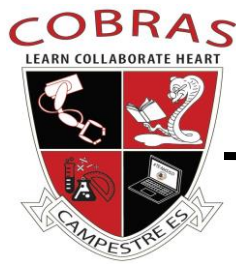
PK -5th Friday, July 27

1st Day of School August 2 *Pre-K and Kinder parents will have special instructions on walking kids in on Day 1. (no other families will be allowed in the building).

CAMPESTRE ELEMENTARY SCHOOL

11399 Socorro Road • El Paso, TX 79927-3011
915/937-7300 • Fax 915/851-1715 • Website: www.sisd.net .

Socorro Independent School District does not discriminate on the basis of race, color, national origin, sex, disability, or age in its programs, activities or employment. El distrito de Socorro no discrimina por raza, color, origen nacional, sexo, de necesidades especiales, o de la edad en el programa, actividades o empleo.



1st Grade-4th Grade:

All 1st grade-4th grade students will arrive between 7:00-7:15 A.M. and will be met outside the front of the school in the designated area. Their teachers or a staff member will guide them to their designated Classroom.

August 2 only: *All PK parents who wish to walk their PK child to their classroom will enter the front door between 7:15-7:30 AM during their entry time, after their 15-minute slot is finished, they will exit out the Front of the school entry doors on the **Passmore** side of the building. Any parents who are not planning to bring their child in on the first day of school may drop students off and they will enter through assigned areas at 7:15-7:30, and a staff member will take them to.

Other Safety Measures and Recommendations

Each student should bring their own water bottle to school. We will have water bottle fillers available at water fountains for refilling only. Sipping is a high-risk activity for spreading the virus.

Hand sanitizer stations will be placed at various entry and exit points around the building. Each classroom is equipped with hand sanitizer dispensers for student use.

Common areas will be disinfected throughout the day.

All items brought to school by parents or guardians should be brought in during the Meet and Greet on July 30 or placed on the table in the Elementary foyer outside the office and labeled with student's name, grade, and teacher (post-its will be provided if needed). Periodically, a staff member will retrieve the items left in the foyer and deliver them to students.

School supplies can be dropped at the front area with staff 8:30-3:00 on August 17th and 18th. Please make sure your students supplies are in a bag/box clearly marked with their first name, last name, Teacher name and grade level.

For the full Socorro ISD Back-To-School Plan, visit: <https://www.sisd.net/backtoschool>

CAMPESTRE ELEMENTARY SCHOOL

11399 Socorro Road • El Paso, TX 79927-3011
915/937-7300 • Fax 915/851-1715 • Website: www.sisd.net .

Socorro Independent School District does not discriminate on the basis of race, color, national origin, sex, disability, or age in its programs, activities or employment. El distrito de Socorro no discrimina por raza, color, origen nacional, sexo, de necesidades especiales, o de la edad en el programa, actividades o empleo.