



## Loma Verde Elementary School

### Back-to-School Plan

*The conditions surrounding the COVID-19 pandemic are continually evolving, and Socorro ISD's Safe Return-to-School plans will be constantly evaluated to adapt to the continuing trends of the COVID-19 virus, especially in the City of El Paso and El Paso County.*

*Please know that Socorro ISD will follow recommendations for school opening and operation from the Centers for Disease Control (CDC), as well as state and local health officials. Circumstances related to COVID-19 may change throughout the coming school year, and this document will be updated as conditions change.*

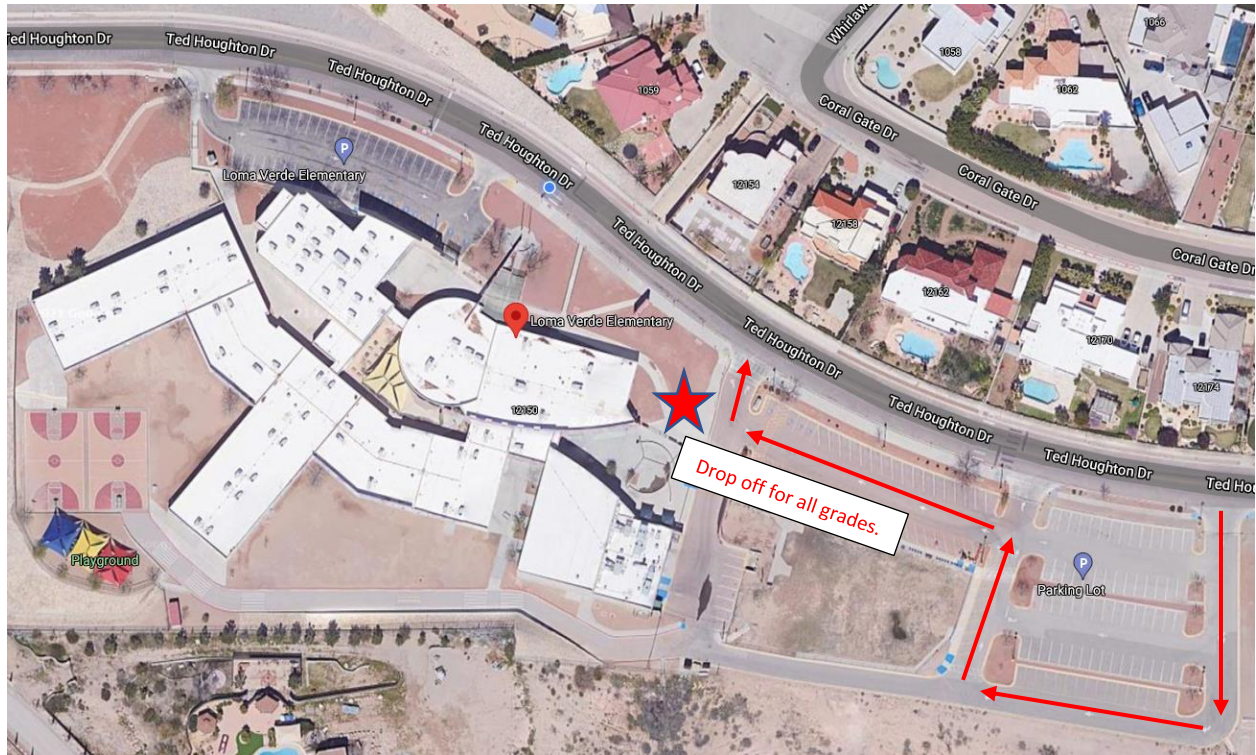
*We will be following the Socorro ISD Back-to-School plan, but this addresses the specific needs of the Loma Verde Elementary Campus.*

### Morning Entry Plan

Student drop off will be at our newly opened gym beginning at 7:00. Parents will enter the parking lot at the farthest east entrance by Ranchos Del Sol Park. Security and monitors will be on hand to guide parents. Students in grades K-5 will stage in their class line socially distanced in the gym where sanitation stations will be located. Pre-K students will be guided to the cafeteria where they will sit with their class at tables for breakfast. Starting at 7:15 students will be released to their classrooms for breakfast. Students arriving after 7:30 will be tardy and will have to enter through our main entrance. Prior to 7:00, parents and students will be responsible for student's entry to school.

Parents may also park in our parking lot or on the street to walk their children to the gym.

Please see map below for a visual map.



## Lunch/Recess plan

Each grade level will rotate in and out of the cafeteria. Students will have time to eat, and then be directed outside to play so the next grade level can be brought into the cafeteria. After each grade level finishes lunch, tables will be sanitized. Sanitation stations are used exiting the cafeteria and re-entering the building after play.

Our school board has also mandated a separate recess period each day. These have been spaced out to limit the number of students outside at one time.

Here is our Bell/Lunch/P.E. schedule

### 2021-22 Bell Schedule

7:15 - 1st bell – Breakfast In Classroom

7:30 - tardy bell – Instruction Begins

### Lunch Schedule

Pre-K 10:20-11:00

Kinder 10:50-11:30

1<sup>st</sup> – 11:05-11:45

2<sup>nd</sup> – 11:20-12:00

3<sup>rd</sup> – 11:35 –12:15  
4<sup>th</sup> – 11:50 –12:30  
5<sup>th</sup> – 12:05-12:45

### **P.E. Schedule**

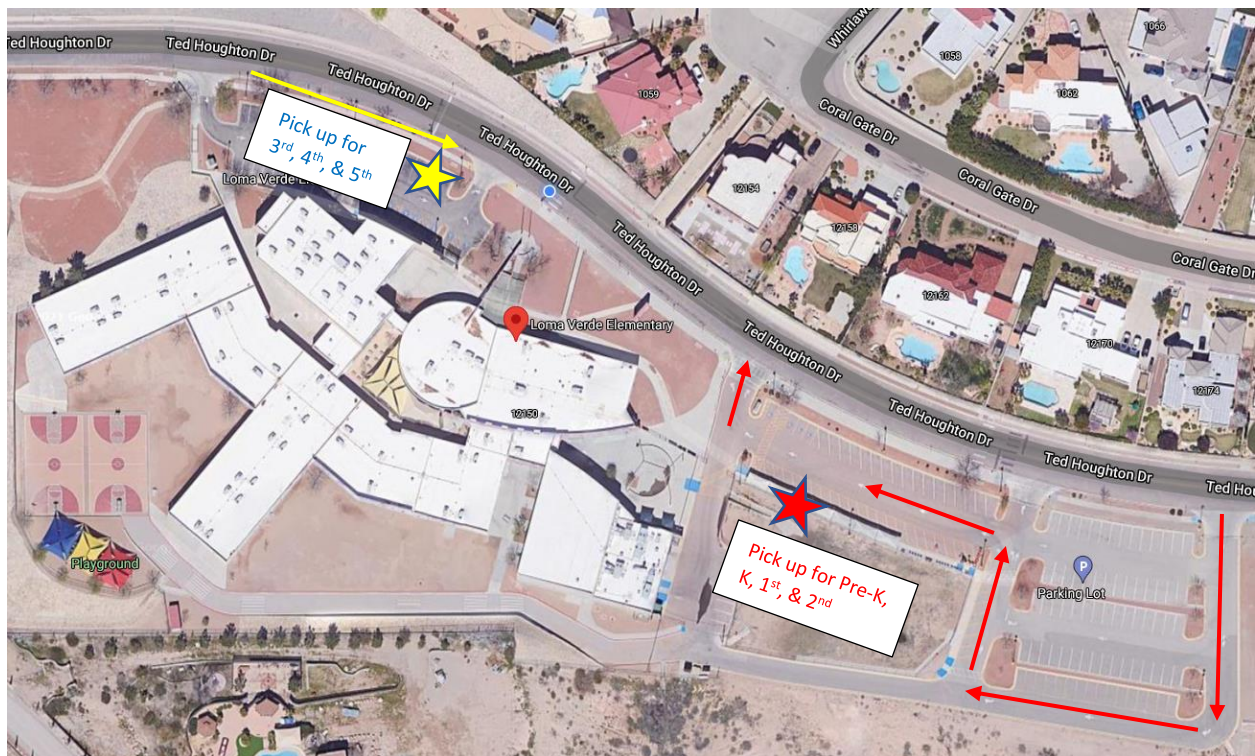
Pre-K - 11:40-12:30  
Kinder - 12:15-1:05  
1<sup>st</sup> - 1:10-2:00  
2<sup>nd</sup> – 10:30-11:20  
3<sup>rd</sup> – 9:35-10:25  
4<sup>th</sup> – 8:40-9:30  
5<sup>th</sup> – 7:45-8:35

## Dismissal Plans

Our dismissal will be very similar to the morning, with one change.

Pre-K through second grade will wait under the canopies next to our gym. Parents will enter that same far east entrance and proceed to the pick-up spot.

3<sup>rd</sup>-5<sup>th</sup> will be staged near the front entrance. Parents may drive up to the curb in front of the teacher parking lot, remain in their vehicles and students will be dismissed to go get in the car.



## Open House

**July 29<sup>th</sup> from 4:00-6:00**

School supplies may be brought to classrooms during this time.

## 1<sup>st</sup> Day of School August 2<sup>nd</sup>

Parents may park and walk their child to class the first day of school. The 2<sup>nd</sup> day of school all students will follow arrival procedures mentioned above.

## Other Safety Measures and Recommendations

Each student should bring their own water bottle to school. We will have touchless water bottle fillers available at water fountains for refilling only.

Hand sanitizer stations will be placed at various entry and exit points around the building. Each classroom is equipped with hand sanitizer dispensers for student use.

Common areas will be disinfected throughout the day.

Masks, face shields, and desk dividers will be available on request.

***If there are any questions, please call the school***

***At 937-8600***